

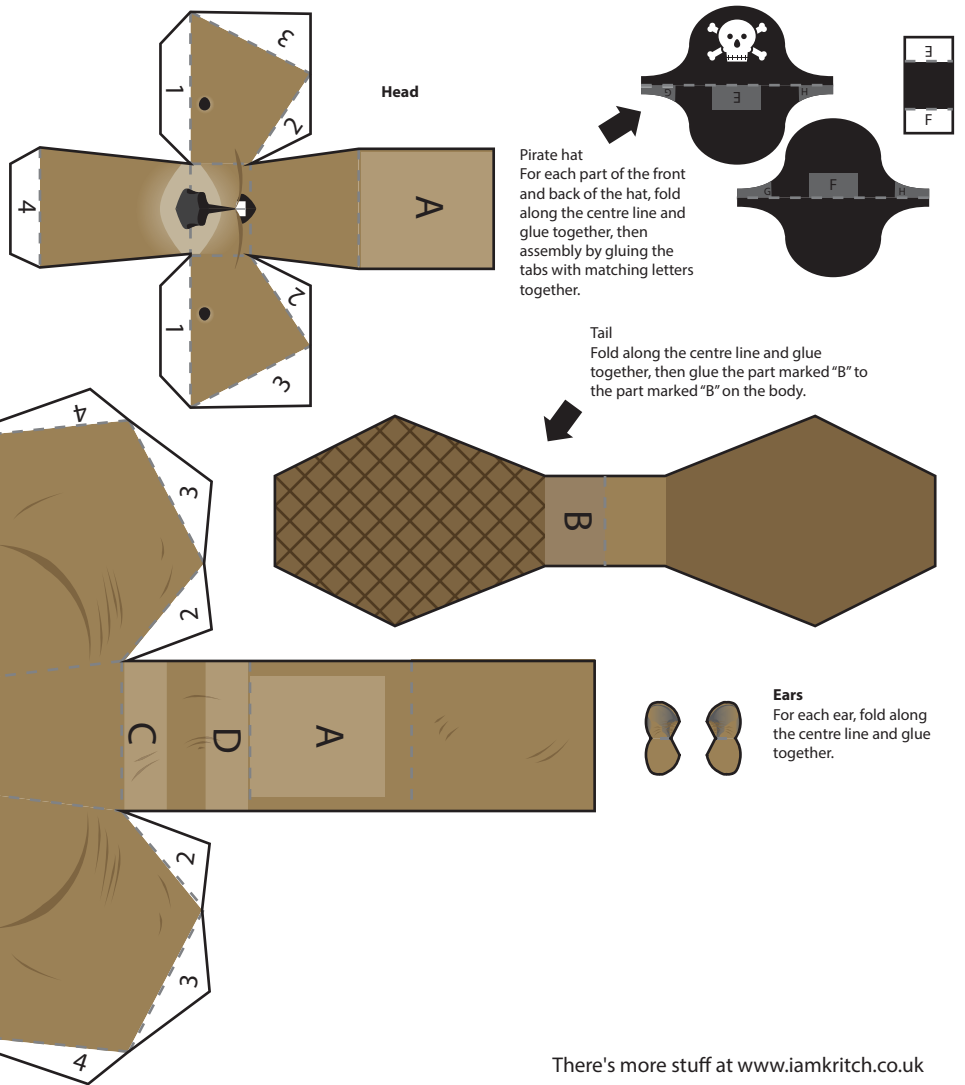
# Beaver

iamkritch.co.uk

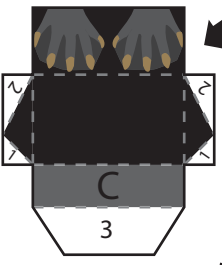
To make this model you'll need scissors and glue, a scalpel is also useful.

Cut along the solid black lines, score and fold along the dashed grey lines. (all folds are mountain folds unless noted.)

The numbers show the suggested gluing order of each part.

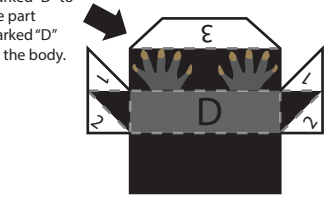


**Hind Legs.**  
Glue the part marked "C" to the part marked "C" on the body.



**Body**

**Front Legs.**  
Glue the part marked "D" to the part marked "D" on the body.



**Pirate hat**  
For each part of the front and back of the hat, fold along the centre line and glue together, then assembly by gluing the tabs with matching letters together.

**Tail**  
Fold along the centre line and glue together, then glue the part marked "B" to the part marked "B" on the body.

**Ears**  
For each ear, fold along the centre line and glue together.